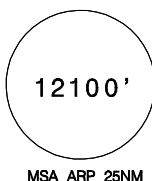
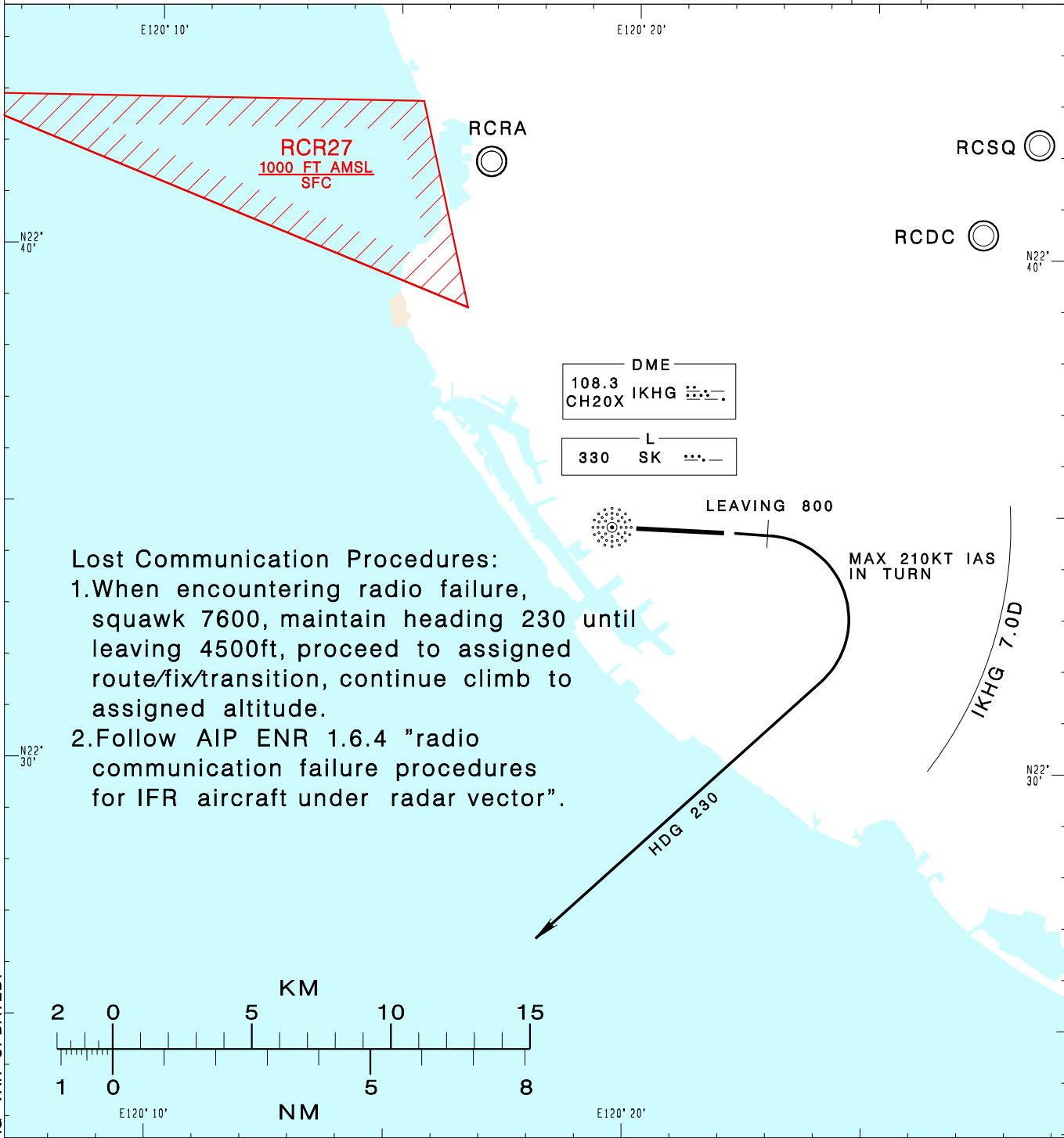


**高雄國際機場**  
KAOHSIUNG INTL AD

RCKH SID  
**SPRAY 1L RADAR(RWY09)**

KAOHSIUNG APP 124.7 125.7	KAOHSIUNG TWR 118.7 120.7	ATIS 127.8	VAR 4° W-2023		
Apt Elev: 32'		Trans Level: FL130			Trans Alt: 11,000'
BEARINGS ARE MAGNETIC; DISTANCES ARE NAUTICAL MILES; ELEVATIONS, HEIGHTS IN FEET					



**Lost Communication Procedures:**

1. When encountering radio failure, squawk 7600, maintain heading 230 until leaving 4500ft, proceed to assigned route/fix/transition, continue climb to assigned altitude.
2. Follow AIP ENR 1.6.4 "radio communication failure procedures for IFR aircraft under radar vector".

**SPRAY ONE LIMA RADAR DEPARTURE**  
Climb on RWY HDG until leaving 800ft, then turn right HDG 230, complete the turn within 7.0D from IKHG, climb to ATC assigned altitude for radar vectoring.

**NOTE**

1. Minimum climb gradient required: 6% (365ft/NM) until 2,000ft.
2. Caution: pier cranes, terrain and stacks east, west and south of the airport.
3. ATS surveillance required.

CHANGES: MSA AND MAG VAR UPDATED.